

Putting the 'ROOT' into 'ROOTine' Data Collection





Kathryn Moyse

Outcomes and Informatics
Manager, Royal College of
Speech & Language Therapists



Katie Chadd

Research and Outcomes
Officer, Royal College of
Speech & Language Therapists

Coming up today



- Overview of the RCSLT Online Outcome Tool
- Reflections and feedback from speech and language therapy service using the ROOT
- Developments, use and applications of the ROOT during COVID

Challenges for the SLT profession

- What do we mean by outcomes?
- How do we capture the impact of speech and language therapy?
- Lack of regional or national uniform outcomes data
- The time burden associated with collecting data
- Analysing and presenting outcomes data effectively

FEATURE
OUTCOME MEASURES

In these strained times, with local decision makers continuing the drive for outcomes-based commissioning of services, it is increasingly important for us all to illustrate the value of speech and language therapy by delivering and measuring effective outcomes. This article looks at some of the common challenges we face in relation to outcomes and examines what SLTs are doing to overcome the perceived hurdles and support the future development of the speech and language therapy profession.

Challenge 1: Breaking away from the focus on outputs
Historically, decision makers have not approached the topic of outcomes in a consistent way and have required speech and language therapy services to report outputs rather than outcomes. It is important to differentiate between inputs, processes, outputs and outcomes (figure one):

- **Inputs** include the infrastructure that needs to be in place, such as the staffing, equipment, money and resources.
- **Processes** are the 'what you do' and the 'how', including activities, interventions and service models.
- **Outputs** can be thought of as the quantitative, immediate results of speech and language therapy input - for example, the number of new referrals seen for assessment, the number of treatments provided and the therapy goals achieved.

Outcomes are concerned with the longer-term impact on the service user, such as

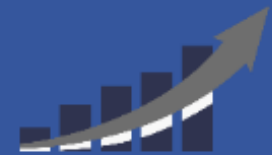
Overcoming the challenges of outcomes

Kathryn Moyses reports on the culture change around delivering and measuring effective outcomes

ILLUSTRATIONS BY DAVOR PAVIĆIĆ

change is expected to come about by mapping the relationship between inputs through to ultimate outcomes and the impact speech and language therapy has on service users. Resources on outcomes and the theory of change are available online (www.rcslt.org/members/outcomes/outcomes).

meaningful outcomes for people, it is trying to measure it as Members Team are in language th



Identified an existing outcome measure that was the 'best fit' for data collection across the SLT profession

Developed and piloted an online tool to support with data collection and reporting – the RCSLT Online Outcome Tool (ROOT)

Evaluation of the pilot indicated that the ROOT added value to the services

Roll-out of the ROOT across the SLT profession using a phased approach

WHAT IS ROOT?

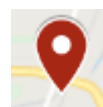


Click [here](#) to find out more

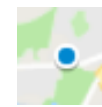
Uptake by the SLT profession



Key



Pilot site/
early adopter



Expression
of interest

Total ROOT data: 1 September 2010 – 31 August 2020

Number of episodes of care	44,150
Number of patients/clients	38,718
Number of SLT services	35

Children's Speech and Language Therapy, Kingston upon Thames



Daisy Childs & Carmel Brady
Speech and Language
Therapists



your healthcare

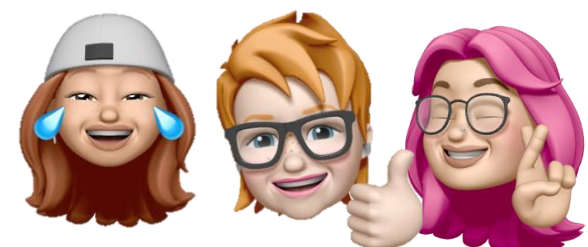
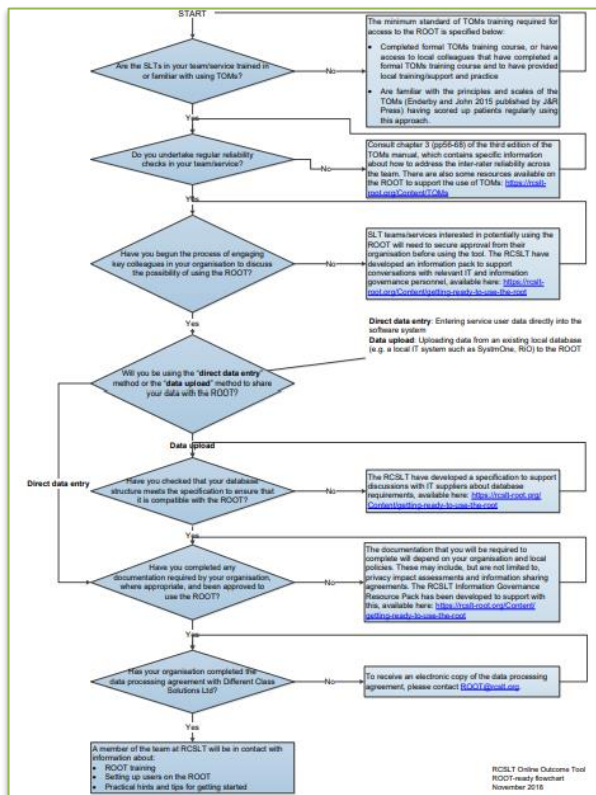
ROOT ready April 2019



What helped?



Synchronicity with clinical system = clean data



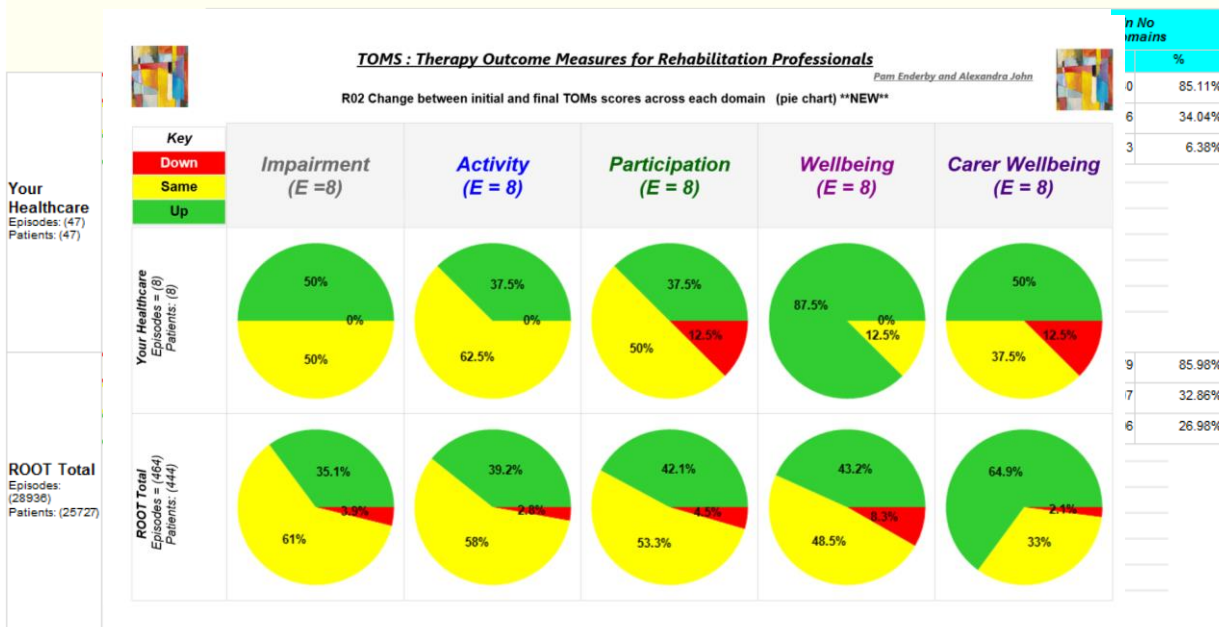
Motivation and support of Information Team



ROOT Ready Flow Chart



Data and Findings to Date



5

Sets
of data sent

118

Total
number of children



What our therapists say about using TOMS

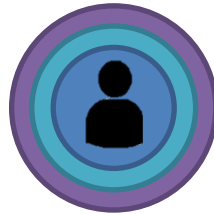


Helps SLTs consider what is important and the priorities for child and family



100% would recommend to a colleague

Helps set functional targets and keeps child at centre



Clear way of measuring difference and the impact

Structure helps SLTs formulate a rationale



Helps with knowing when to discharge - due to structure and considering change/impact

Easy and can be carried out quickly, once the SLTs get the hang of it



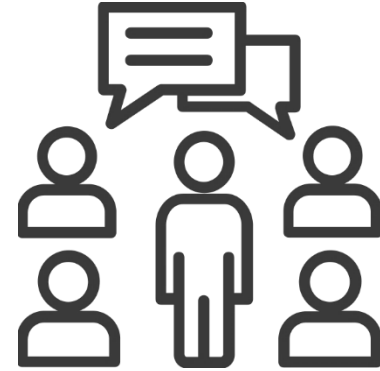
Useful to give to SLTAs



Intentions and Aspirations



Use TOMs to evaluate service offers such as therapy groups, training and parent workshops



Use TOMs to coproduce KPIs with our commissioners for a pending contract



Continue to collect and analyse ROOT data to inform service design



How is the ROOT supporting speech and language therapists to deliver quality services?



Visit our [website](#) for some detailed examples of how the outcomes data is being used by services, including:

- Supporting individual clinicians with their clinical decision making and to inform patient care
- Evaluating the effectiveness of interventions and areas for improvement
- Supporting service improvement, planning and redesign
- Providing information about the impact of speech and language therapy to key stakeholders, including funders and commissioners

The ROOT during COVID-19



- Engagement with the project has increased over the course of the pandemic
 - Focus on importance of routine clinical data in absence of research evidence

- New developments:
 - Fields have been added to the ROOT to enable services to capture additional information (optional)
 - Launched the COVID-19 data collection tool, which uses TOMs, specifically for use with individuals with confirmed/suspected COVID-19

The ROOT during COVID-19



- The data will assist the profession with:
 - Understanding the presentation, management and outcomes of individuals with COVID-19 receiving speech and language therapy
 - Highlighting the contribution of speech and language therapy in the rehabilitation of individuals with COVID-19
 - Evaluating whether different methods of service delivery have an impact on outcomes

Interested in finding out more about the ROOT?



- Visit our website:
<https://www.rcslt.org/speech-and-language-therapy/guidance-for-delivering-slt-services/outcome-measurement/outcome-tool-overview>

- Contact us: root@rcslt.org

- Read our article:
<https://informatics.bmj.com/content/bmjhci/27/1/e100085.full.pdf>

Open access

Short report

BMJ Health & Care Informatics

Outcome measurement in speech and language therapy: a digital journey

Kathryn Moyse,¹ Pamela Enderby,² Katie Chadd,¹ Kamini Gadhok,¹ Mark Bedwell,³ Patrick Guest³

To cite: Moyse K, Enderby P, Chadd K, *et al.* Outcome measurement in speech and language therapy: a digital journey. *BMJ Health Care Inform* 2020;**27**:e100085. doi:10.1136/bmjhci-2019-100085

Received 05 June 2019
Revised 05 November 2019
Accepted 27 March 2020

ABSTRACT

Background Evidencing the impact of speech and language therapy interventions is challenging. The UK's professional body for speech and language therapists (SLTs) is supporting a consistent approach to outcome measurement and analysis using Therapy Outcome Measures (TOMs).

Objective To develop a digital solution for collecting TOMs data, evaluate the impact of therapeutic interventions and explore contributing factors to outcome variation across clinical areas.

Method Agile methodology was applied to software development. Organisations were recruited to provide data. Criteria were identified to exemplify outcome variability.

Results A digital tool was developed. 21 organisations provided data on 16356 individuals. Improvement in at least one domain of TOMs occurred in 77.1% of instances. Data for two clinical areas exemplify the tool's effectiveness in highlighting the impact of speech and language therapy.

Conclusion This established outcomes data set can be used to evaluate the impact of speech and language therapy, and explore variation in outcomes.

order to maximise internal validity⁵ yet such attributes describe the majority of patients.

Increasingly, the value of applying 'real-world' data to support quality services, is recognised, with the role of information and digital technology frequently highlighted in national policies.⁶⁻¹⁰ Nevertheless, there are numerous barriers for SLTs in the UK, including the absence of tools to support data collection and analytics. In recognition of this, the Royal College of Speech and Language Therapists (RCSLT) is undertaking a programme of work on outcome measurement, data collection and analysis with the aim of supporting SLTs with delivering quality services.

To promote a more consistent approach to outcome measurement across the profession the RCSLT undertook a review of 63 candidate measures.¹¹ Following a synthesis and Delphi consensus approach,¹² Therapy

Registration page for speech and language therapists:

<https://rcslt-root.org/Public/Register>



Thanks for listening